



CYNGHRAIR  
CAFFAEL  
CYMREIG | WELSH  
PROCUREMENT  
ALLIANCE

# Retrofit and Decarbonisation

18TH FEBRUARY 2025 TO 17TH FEBRUARY 2029



N9 Framework Guide



**Constructing Excellence**  
Gold Standard Verified

Improving lives and places  
through quality procurement solutions

[welshprocurement.cymru](https://welshprocurement.cymru)





WPA provides compliant frameworks and Dynamic Purchasing Systems (DPS) which can be used by local authorities, social landlords and other public sector bodies to procure works, products and services for the construction, refurbishment and maintenance of social housing, schools and public buildings. Our vision is to be recognised throughout Wales as a centre of excellence for public sector procurement.

We operate in Wales connecting construction companies, manufacturers and service providers with the needs of our clients. We bring buyers and suppliers together, to build and maintain public property more efficiently and cost effectively, and to benefit local communities.

Our activity is guided by the WPA Committee which is made up of Local Authorities and Housing Associations from across Wales.

WPA is backed by LHCPG, a not-for-profit organisation, governed by public law and a central purchasing body providing procurement services in the UK, since 1966. All Contract Notices are issued on behalf of the WPA by LHCPG, who have an in-house team of technical procurement experts that produce and manage the frameworks.

WPA aims to deliver solutions for compliance, quality and best value and provides procurement and technical support and advice throughout the duration of our clients' projects. Any organisation that is publicly or partially publicly funded is eligible to utilise our frameworks.

If you would like any of the content of this brochure translated into Welsh please ask. Os hoffech i unrhyw ran o'r gynnwys y pamffled hwn gyfieithu i'r Gymraeg gofynnwch os gwelwch yn dda.

## Welsh Procurement Alliance (WPA)

Tredomen Innovation & Technology Centre | Tredomen Park | Ystrad Mynach | CF82 7FQ

02922 802 476

info@welshprocurement.cymru

@WelshProcure

WPA (Welsh Procurement Alliance)

## WHY HAS THIS FRAMEWORK BEEN DEVELOPED?

CN 2024/S 000-013791 CAN 2025/S 000-010682

**The Retrofit and Decarbonisation (N9) Framework is the successor to the Energy Efficiency Measures and Associated Works (N8) Framework, and has been developed following extensive pre-tender engagement and collaboration within the sector.**

The framework is designed to support local authorities, housing associations, education, healthcare providers including NHS and other public sector organisations in delivering a range of energy efficiency and decarbonisation works, supporting them with the challenge of achieving net zero and improving the EPC ratings of their

stock. The appointed companies to this framework will provide clients access to quality national, regional and local solutions for specialist retrofit and decarbonisation works of domestic housing stock and other public sector buildings.

The framework has been designed to be flexible and is future-proofed against the changes within the sector to ensure it remains relevant during its four-year duration. With the challenges of reaching net zero by 2050 and reducing the carbon emissions of their stock, local authorities and housing associations need a robust, compliant and efficient option to deliver the work required.

## About this framework

**The framework provides an extensive offering and scope across various workstreams including; consultancy, multi-disciplinary works, building insulation and performance, and various control and energy efficiency management systems.**

Collaboration with the sector and pre-tender engagement was extensive and recognised the challenges faced by the market.

Key recommendations such as adopting the enhanced qualifications as a standard requirement, and prioritising not only low-carbon heating solutions, but also promoting a holistic fabric/design approach have been incorporated, as have addressing the skills gap in renewable energy. Access to grant funding and direct award options also featured amongst the pre-tender feedback. The framework considers these challenges and provides access to relevant information. In addition, consultancy services within the framework have been clearly defined to ensure alignment with decarbonisation goals.

### Key benefits at a glance:

- ✓ Signposting to specific grant funding, facilitating **smoother access** to necessary resources.
- ✓ Promoting a **'fabric first' approach** where the building fabric is improved first, alongside individual measures tailored to specific needs.
- ✓ Informing clients to **innovative technologies and solutions** for efficient project delivery, including webinars and product discussions.
- ✓ Creating opportunities for partnerships and sharing best practices to **improve project delivery**.
- ✓ Encouraging commitment to **achieving PAS 2030:2035 standards** and enforcing mandatory compliance within a set timeframe.
- ✓ Ensuring that clients have **access to skilled and experienced suppliers** who are aligned with key policies, best practice and funding requirements who can deliver retrofit projects effectively.

The tender was carried out in strict accordance with the UK Public Contracts Regulations 2015. Places on the framework were awarded to 42 companies across six workstreams. The companies appointed to the framework are experts in their field, with a proven track record

in delivering projects with public sector clients. The term of the framework is from **18th February 2025 to 17th February 2029**. Individual call-off projects can be completed beyond the four-year duration of the framework, as long as the project has been formally awarded prior to the framework expiry date.



# ABOUT THIS FRAMEWORK

## VISION FOR THE FRAMEWORK

### Our Vision for the Retrofit and Decarbonisation Framework

All our frameworks are developed to meet and exceed the needs of the Constructing Excellence Gold Standard Verification for public sector frameworks, via the Constructing Excellence ‘Constructing the Gold Standard Verification Scheme’.

We are very proud to now be verified as one of only six framework providers out of more than 2000 in the UK, and the only one to implement this nationwide across five regions.

We pride ourselves on our longstanding commitment to early engagement and collaboration, bringing specialist suppliers and public sector bodies together to guide framework development ensuring best possible outcomes for the public sector, local authorities and housing associations.



The principle aim for the framework throughout its development has been to provide the public sector with a substantial and high-quality framework that provides support to the vast and increasing decarbonisation challenge. Meeting the governments retrofit requirements on existing property portfolios whilst considering the needs of the residents and occupiers of these homes and buildings, are key objectives of the framework.

By improving the quality and condition of many properties, local authorities can help support tenants living in less-than-ideal conditions such as damp, mould and cold effected housing, helping to improve their health and wellbeing, and going some way to alleviating the cost-of-living crisis.

This framework is also the first in our history to have been created with key strategic social value objectives and a set of key measurements for all organisations appointed to the framework. It is a vital step forward for us to ensure we deliver on our social value commitments and continue in our goal of **‘Improving Lives and Places’**.

# ABOUT THIS FRAMEWORK

## SOCIAL VALUE COMMITMENTS

### The N9 framework and social value commitments

Our Social Value Strategy commits LHCPG and our appointed companies to clearly define the social value that can be

delivered through our frameworks, and the system for measuring and monitoring it.

Our procurement frameworks will retain their current level of excellence in providing the highest quality solutions.

LHCPG will further maximise the positive impact of our ‘not-for-profit’ status by influencing and measuring how projects delivered through our frameworks enhance the benefits we provide for our communities.

Our frameworks will become further differentiated by an increased focus on social value aligned to our overall vision of ‘Improving Lives and Places’.

The Retrofit and Decarbonisation Framework has been created with key strategic social value objectives in mind, aligning them to a set of key measurements.

All organisations appointed to this framework will be expected to work with WPA and our clients to help identify, deliver and capture social value outcomes associated with the delivery of projects that are awarded through the framework.

The key social value sub-priorities that align with this framework are highlighted in the social value wheel diagram on the right.



“We’re proud to introduce – for the first time - specific social value targets that are connected to the delivery of our frameworks. It’s a vital step forward in ensuring we deliver our social value commitments and continue on our mission of Improving Lives and Places.”

George Stevens - Director of Communities at LHC Procurement Group

CONSULTANCY  
OVERVIEW

Workstream 1 - Consultancy

Introduction and Scope

Combines energy policy and strategy development with grant funding support, providing comprehensive assistance to organisations in planning and implementing energy-efficient strategies.

Types of services will include, but are not limited to:

- Energy Policy/Strategy & Grant Funding Support
  - PAS 2035 (Domestic Building Audits & Heat Decarbonisation Plans)
- Management Agent / Multi-Disciplinary Consultancy
  - PAS 2038 (Non-domestic Building Audits & Heat Decarbonisation Plans)

Energy Policy & Strategy Development and Grant Funding Support				
Appointed Companies	North Wales	Mid Wales	South-West Wales	South-East Wales
Gleeds Building Surveying	✓	✓	✓	✓
Scene Connect		✓		
Severn Wye Energy Agency	✓	✓	✓	✓
Sureserve Energy Services UK	✓		✓	✓
Turner & Townsend Consulting	✓	✓	✓	✓
Warmworks Scotland	✓	✓	✓	✓
XCO2 Energy	✓	✓	✓	✓

Management Agent / Multi-Disciplinary Consultancy				
Appointed Companies	North Wales	Mid Wales	South-West Wales	South-East Wales
Arthian	✓	✓	✓	✓
Bailey Partnership (Consultants)	✓	✓	✓	✓
Michael Dyson Associates		✓		
Netzero Collective	✓	✓	✓	✓
Severn Wye Energy Agency		✓		
Sureserve Energy Services UK	✓		✓	✓
Turner & Townsend Consulting	✓	✓	✓	✓
Warmworks Scotland	✓	✓	✓	✓

PAS 2035 (Domestic Building Audits & Heat Decarbonisation Plans)				
Appointed Companies	North Wales	Mid Wales	South-West Wales	South-East Wales
Litegreen	✓	✓	✓	✓
Michael Dyson Associates	✓	✓	✓	✓
Netzero Collective	✓	✓	✓	✓
Severn Wye Energy Agency	✓	✓	✓	
Sureserve Energy Services UK	✓		✓	✓
Synergize	✓	✓	✓	✓
XCO2 Energy	✓	✓	✓	✓

CONSULTANCY  
APPOINTED COMPANIES (All Appointed Companies are listed alphabetically)

PAS 2038 (Non-domestic Audits & Heat Decarbonisation Plans)				
Appointed Companies	North Wales	Mid Wales	South-West Wales	South-East Wales
Arthian	✓	✓	✓	✓
Bailey Partnership (Consultants)	✓	✓	✓	✓
Severn Wye Energy Agency	✓	✓	✓	✓
Sureserve Energy Services UK	✓		✓	✓
XCO2 Energy	✓	✓	✓	✓





# MULTI-DISCIPLINARY WORKS

## OVERVIEW

### Workstream 2 - Multi-Disciplinary Works

#### Introduction and Scope

Focuses on multi-technology installations with clarified value bands, accommodating diverse contract sizes and technologies, and includes provisions.

The multi-disciplinary lots provide clients with a route to approved contractors who can provide a range of retrofit and decarbonisation services under a single contract. Contractors appointed to this lot will be able to offer Client’s assessment, design, installation and commissioning of retrofit and decarbonisation services, either via direct labour or via sub-contractor where they will act as principal contractors.

#### Types of services will include, but are not limited to:

- Multi-Disciplinary Works – £0 - £750K
- Multi-Disciplinary Works – £750K - £2.5m
- Multi-Disciplinary Works – £2.5m plus

Multi-Disciplinary Works – £0 - £750k				
Appointed Companies	North Wales	Mid Wales	South-West Wales	South-East Wales
Bell Group	✓	✓	✓	✓
Cardo Wales & West	✓	✓	✓	✓
CLC Contractors	✓	✓		
E.ON UK Green Funding Solutions	✓	✓		
Ian Williams	✓	✓	✓	✓
Low Carbon Exchange	✓	✓	✓	✓
Property Building Maintenance (Wales)			✓	✓
R&M Williams (Holdings)		✓	✓	✓
Smart Energy Homes	✓	✓		✓
Sureserve Energy Services UK	✓		✓	✓
Synergize	✓	✓	✓	✓

Multi-Disciplinary Works – £750K – £2.5m				
Appointed Companies	North Wales	Mid Wales	South-West Wales	South-East Wales
Bell Group	✓	✓	✓	✓
CLC Contractors	✓	✓	✓	✓
E.ON UK Green Funding Solutions	✓	✓	✓	
Ian Williams	✓	✓	✓	✓
Low Carbon Exchange	✓	✓	✓	✓
M&J Group (Construction and Roofing)		✓		
R&M Williams (Holdings)		✓	✓	✓
Sureserve Energy Services UK	✓		✓	✓
Sustainable Building Services (UK)	✓			✓
Synergize	✓	✓	✓	✓

# MULTI-DISCIPLINARY WORKS

## APPOINTED COMPANIES (All Appointed Companies are listed alphabetically)

Multi-Disciplinary Works – £2.5m plus				
Appointed Companies	North Wales	Mid Wales	South-West Wales	South-East Wales
Bell Group	✓	✓	✓	
CLC Contractors	✓	✓	✓	✓
E.ON UK Green Funding Solutions	✓	✓	✓	✓
Ian Williams	✓	✓	✓	✓
Joyner PA Cymru		✓		
Low Carbon Exchange	✓	✓	✓	✓
R&M Williams (Holdings)		✓	✓	✓
Smart Energy Homes		✓		
Sureserve Energy Services UK	✓		✓	✓
Sustainable Building Services (UK)	✓			✓
Synergize	✓	✓	✓	✓



BUILDING INSULATION  
OVERVIEW

Workstream 3 - Building Insulation

Introduction and Scope

Covers various insulation types, including internal, loft, cavity wall, and external insulation, with specific lots tailored to different building sizes and types. The workstream covers fabric elements that are needed to enhance a property’s energy efficiency, reducing heat loss, and associated energy costs for occupants.

This lot covers internal, external, cavity wall, and loft insulation, and can be applied to all property types – including those both below and above 11 metres, as well as including a specialised rainscreen cladding lot.

Types of services will include, but are not limited to:

- Internal Insulation
  - Loft Insulation
  - Cavity Wall Insulation
- External Wall Insulation - Project Band 1 - up to 11m
  - External Wall Insulation - Project Band 2 - 11m or Higher
  - Rainscreen Cladding

Internal Insulation				
Appointed Companies	North Wales	Mid Wales	South-West Wales	South-East Wales
ASW Property Services			✓	✓
MP Group UK	✓	✓	✓	✓
Sureserve Energy Services UK	✓		✓	✓
Sustainable Building Services (UK)	✓			✓
Zing Energy	✓	✓	✓	✓

Loft Insulation				
Appointed Companies	North Wales	Mid Wales	South-West Wales	South-East Wales
ASW Property Services			✓	✓
Bell Group	✓	✓	✓	✓
MP Group UK	✓	✓	✓	✓
R&M Williams (Holdings)		✓	✓	✓
Sureserve Energy Services UK	✓		✓	✓
Synergize	✓	✓	✓	✓
Zing Energy	✓	✓	✓	✓

Cavity Wall Insulation				
Appointed Companies	North Wales	Mid Wales	South-West Wales	South-East Wales
Bell Group	✓	✓	✓	✓
MP Group UK	✓	✓	✓	✓
Sureserve Energy Services UK	✓		✓	✓
Synergize	✓	✓	✓	✓
Zing Energy	✓	✓	✓	✓

BUILDING INSULATION  
APPOINTED COMPANIES (All Appointed Companies are listed alphabetically)

External Wall Insulation - Project Band 1 - up to 11m				
Appointed Companies	North Wales	Mid Wales	South-West Wales	South-East Wales
ASW Property Services			✓	✓
Bell Group	✓	✓	✓	✓
CARDO (Wales & West)	✓	✓	✓	✓
Joyner PA Cymru		✓	✓	✓
MP Group UK	✓	✓	✓	✓
Sureserve Energy Services UK	✓		✓	✓
Sustainable Building Services (UK)	✓			✓
Synergize	✓	✓	✓	✓

External Wall Insulation - Project Band 2 - 11m or Higher				
Appointed Companies	North Wales	Mid Wales	South-West Wales	South-East Wales
ASW Property Services			✓	✓
CARDO (Wales & West)	✓	✓	✓	✓
Sureserve Energy Services UK	✓		✓	✓
Synergize	✓	✓	✓	✓



HEATING & VENTILATION SYSTEMS  
OVERVIEW

Workstream 4 - Heating & Ventilation Systems

Introduction and Scope

Encompasses a range of heating solutions, from domestic to non-domestic systems, and integrates smart controls and energy systems where applicable.

This workstream provides the technologies necessary for upgrading to smarter, more efficient heating and ventilation solutions. The scope of the individual lots allows for traditional, domestic high efficiency, boiler-based heating and hot water systems; right through to electrical, renewable, clean and green technologies to also provide space heating and hot water systems. The available options also allow for installations of all sizes and complexities, such as for communal, and district heating systems, but not forgetting, the important aspect of ventilation, all paired with control systems to offer integration and end user comfort, efficiency, and innovation.

Types of services will include, but are not limited to:

- Domestic Boiler Based Space Heating Systems
  - Domestic Renewables Space Heating Systems
  - Non-domestic & Communal Heating Systems
- District & Network Heating Systems
  - Electrical Space Heating Systems
  - Building Ventilation Systems

Domestic Boiler Based Heating Systems				
Appointed Companies	North Wales	Mid Wales	South-West Wales	South-East Wales
Easy Heat Systems	✓	✓		
Gibson Specialist Technical Services	✓	✓	✓	✓
Greenlands Heating	✓	✓	✓	✓
IVOR COOK	✓	✓	✓	✓
MP Group UK	✓	✓	✓	✓
PH Jones	✓	✓	✓	✓
PHS Home Solutions	✓	✓	✓	✓
Sureserve Energy Services UK	✓		✓	✓
Warmserve Services			✓	✓



HEATING & VENTILATION SYSTEMS  
APPOINTED COMPANIES (All Appointed Companies are listed alphabetically)

Domestic Renewables Space Heating Systems				
Appointed Companies	North Wales	Mid Wales	South-West Wales	South-East Wales
Easy Heat Systems		✓		
Gibson Specialist Technical Services	✓	✓	✓	✓
Greenlands Heating	✓	✓	✓	✓
IVOR COOK	✓	✓	✓	✓
MP Group UK	✓	✓	✓	✓
PH Jones	✓	✓	✓	✓
PHS Home Solutions	✓	✓	✓	✓
Sureserve Energy Services UK	✓		✓	✓
Zing Energy	✓	✓	✓	✓

Commercial & Communal Heating Systems				
Appointed Companies	North Wales	Mid Wales	South-West Wales	South-East Wales
Easy Heat Systems	✓	✓		
Gibson Specialist Technical Services	✓	✓	✓	✓
PHS Home Solutions	✓	✓	✓	✓
Warmserve Services			✓	✓

District & Network Heating Systems				
Appointed Companies	North Wales	Mid Wales	South-West Wales	South-East Wales
Easy Heat Systems	✓	✓		
Gibson Specialist Technical Services	✓		✓	✓

Electrical Heating Systems				
Appointed Companies	North Wales	Mid Wales	South-West Wales	South-East Wales
Easy Heat Systems	✓	✓		
MP Group UK	✓	✓	✓	✓
PH Jones	✓	✓	✓	✓
Sureserve Energy Services UK	✓		✓	✓

Building Ventilation Systems				
Appointed Companies	North Wales	Mid Wales	South-West Wales	South-East Wales
Sureserve Energy Services UK	✓		✓	✓
Zing Energy	✓	✓	✓	✓



HEATING & VENTILATION SYSTEMS  
OVERVIEW

Workstream 5 - Control and Management Systems

Introduction and Scope

Addresses building management systems (BMS) and individual metering, catering to the needs in communal heating systems and energy management.

The comprehensive Controls and Building Management workstream is designed to optimise environmental control, monitoring, metering, and create healthy air environments. This solution delivers innovative and technological improvements throughout its lifespan and has dedicated lots for emerging markets like individual metering, as well as ventilation systems and lighting control.

Types of services will include, but are not limited to:

- Building Management Systems
- Individual Metering

Individual Metering				
Appointed Companies	North Wales	Mid Wales	South-West Wales	South-East Wales
Sycous	✓	✓	✓	✓

Workstream 6 - Electrical

Introduction and Scope

Includes lots for Solar PV and Battery Storage, and Electric Vehicle (EV) Charging, responding to the growing demand for integrated energy solutions and EV infrastructure.

This Electrical workstream encompasses lots from solar PV generation and electrical energy storage solutions, through to advancing EV charging infrastructure. Having dedicated lots, you'll gain access to qualified, skilled and competent installers across all areas of renewable electrical generation, distribution control, and even vehicle-to-grid integration.

Types of services will include, but are not limited to:

- Solar PV and Battery Storage
- EV Charging

Solar PV and Battery Storage				
Appointed Companies	North Wales	Mid Wales	South-West Wales	South-East Wales
ASW Property Services			✓	✓
Bell Group	✓	✓	✓	✓
Channel Electrical Systems	✓	✓	✓	✓
Easy Heat Systems	✓	✓		
Feed it Green	✓			
Gibson Specialist Technical Services	✓	✓	✓	✓
GMI Electrical		✓	✓	✓
Greenlands Heating	✓	✓	✓	✓
Lightning Solutions (Wales)		✓		✓
R&M Williams (Holdings)		✓	✓	✓
Sureserve Energy Services UK	✓		✓	✓
Zing Energy	✓	✓	✓	✓

HEATING & VENTILATION SYSTEMS  
APPOINTED COMPANIES (All Appointed Companies are listed alphabetically)

EV Charging				
Appointed Companies	North Wales	Mid Wales	South-West Wales	South-East Wales
Anglesey Solar and Electrical	✓			
Feed it Green	✓			
Gibson Specialist Technical Services	✓	✓	✓	✓
GMI Electrical				✓
Greenlands Heating	✓	✓	✓	✓
Lightning Solutions (Wales)				✓
MP Group UK	✓	✓	✓	✓
PHS Home Solutions	✓	✓	✓	✓
Zing Energy			✓	





EVALUATION

WEIGHTING, ACCREDITATION AND CERTIFICATIONS

A single stage open tender process was used as set out within the Public Contract Regulations 2015.

**Quality Weighting 70%**

Emphasis on factors such as previous experience, case studies, and scenarios. **50%**

Focus on regional capability, including the social value and community benefits a bidder can offer. Evaluations were carried out by the WPA team.

Total Quality – inclusive of 20% social value. **20%**

**Price Weighting 30%**

A full breakdown of the price weighting is lot dependent, but is typically split between Schedule of Rate, Components, Day Rates and Overheads & Profits.

Contact your regional team for full breakdown of price weighting

70%  
Quality

30%  
Price

Accreditations and Certifications

In order to be considered eligible for this Framework, Appointed Companies were required to evidence that they had the relevant health and safety, environmental, equality and quality systems as listed below:

**Compliance with Equality Act 2010**

Confirmatory statements demonstrating compliance with the Equality Act 2010 and adherence to promoting equality and diversity within their company.

**Environmental Management\***

Compliance with BS EN ISO 14001

**Health and Safety\***

Compliance with BS EN ISO 45001

**Quality Management\***

Compliance with BS EN ISO 9001

**Lot Specific Accreditations / Certification**

Where applicable evidence of the relevant accreditations, certifications, and membership of trade bodies applicable to the lot they are awarded to was required.

\*Where certification was not held, Appointed Companies were required to complete the appropriate CAS 91 questions to evidence compliance.

EVALUATION

WEIGHTING, ACCREDITATION AND CERTIFICATIONS

Minimum Insurance Cover

Throughout the duration of the framework Appointed Companies are required to have the minimum levels of insurance as follows:

Workstreams - Lot Description	Employer's Liability Insurance	Public Liability Insurance	Professional Indemnity	Product Liability
Workstream 1 - Consultancy	£5m	£5m	£1m	N/A
Workstream 2 - Multi-Disciplinary Works - Lots 5 - 6	£5m	£5m	£1m	£1m
Lot 7	£5m	£5m	£2m	£2m
Workstream 3 - Building Insulation - Lots 8 - 11	£5m	£5m	£1m	£1m
Lots 12 - 13	£5m	£5m	£2m	£2m
Workstream 4 - Heating & Ventilation Systems	£5m	£5m	£1m	£1m
Workstream 5 - Building Control & Management	£5m	£5m	£1m	£1m
Workstream 6 - Solar PV and Electrical	£5m	£5m	£1m	£1m

Financial Stability Assessment

Appointed Companies were assessed on their financial stability based on a range of financial information including post-tax profit, current liabilities and verified credit scoring via Creditsafe. The results of these checks were assessed on a pass/fail.

Framework Certification

We're raising the bar for quality and sustainability by integrating the PAS 2030 Standard into our framework. These certifications ensure that all Appointed Companies we work with uphold the highest standards in sustainable practices. Recognising that not all bidders currently possess these qualifications, we are committed to facilitating this transition.

To support this initiative, we're asking all potential bidders to demonstrate their commitment to achieving PAS 2030 accreditation within two years of joining the framework. This approach allows us to collaborate with forward-thinking companies while providing a clear pathway for those still working towards these credentials. Please note, companies unable to secure the accreditation within the specified time frame will not remain on the framework, as we continue to prioritise excellence and accountability.



# CALL-OFF AWARD OPTIONS

## THE FRAMEWORK ALLOWS PARTNERS THE OPTION OF:

**Direct award** without further competition, where all terms and conditions of the call-off project are within the terms and conditions of the framework

OR

**Mini-competition**, where terms and conditions of the call-off may vary or be modified from the framework or at the choice of the Partner.

When calling off projects, clients can use any one of a range of standard forms of building contract including JCT/SBCC, NEC/NEC4, ACE, PPC, TPC, FAC1, or their own in-house agreement.

## ELIGIBILITY

WPA is part of LHCPG, a not-for-profit organisation, governed by public law, and a central purchasing body providing procurement services.

Over 300 publicly funded organisations throughout the UK currently use LHCPG frameworks to procure works, goods and services to construct, refurbish and maintain social housing, schools and public buildings. The specific classes of public sector organisation authorised to use the framework include:

- Local Authorities and any subsidiaries and joint-venture vehicles of those Local Authorities

- Housing Associations and other Registered Social Landlords (RSLs)
- Health Authorities, Councils, Boards and Trusts
- Publicly funded schools
- Universities, colleges and other further education establishments
- Police authorities
- Fire and Rescue services
- Registered charities
- Government departments

**NB:** The framework can also be used by other organisations that are either publicly funded or have been given public funds and require a compliant procurement route.

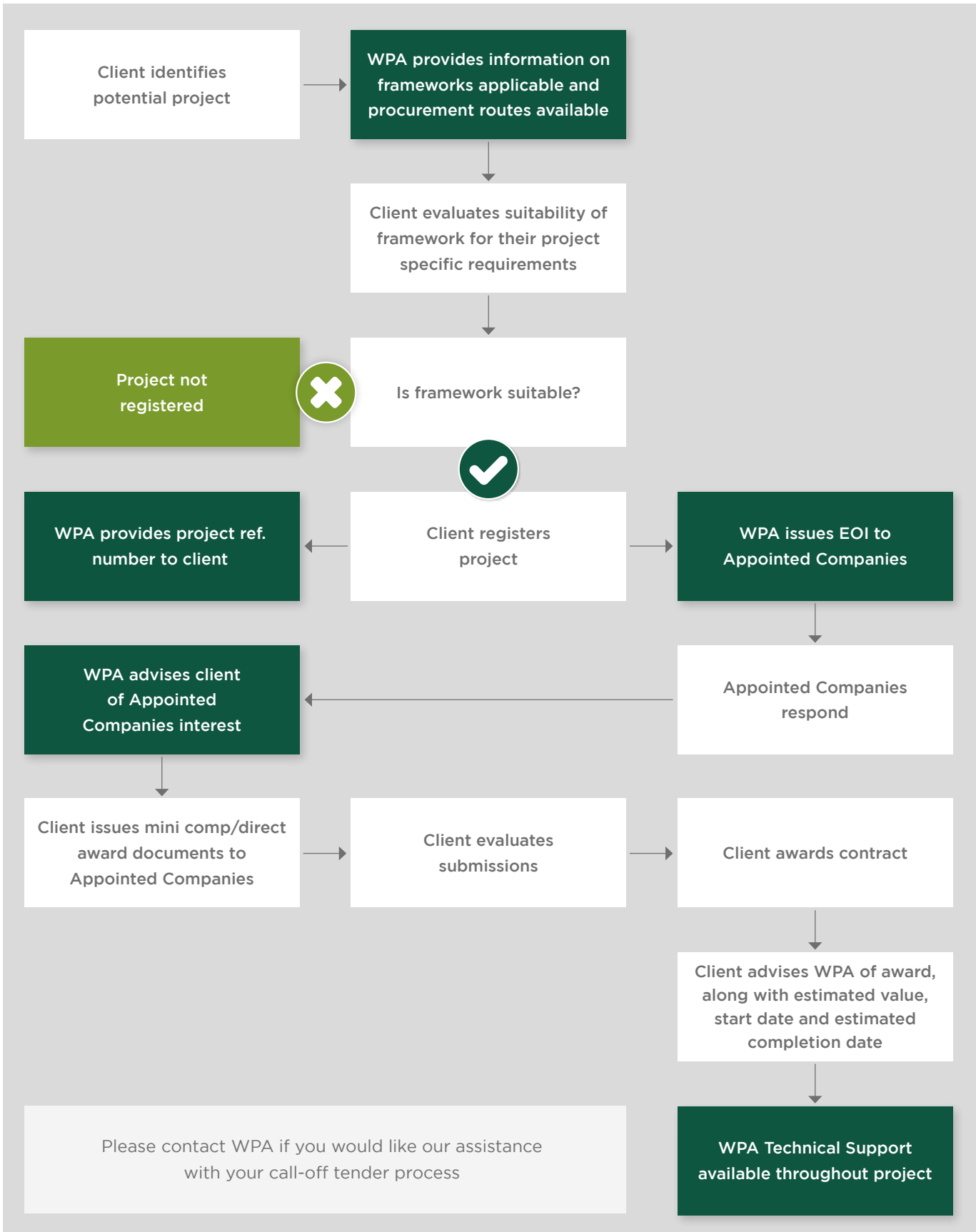
Details of those contracting authorities identified are listed at:  
[www.welshprocurement.cymru/who-we-work-with/](http://www.welshprocurement.cymru/who-we-work-with/)

## GENERAL TERMS AND CONDITIONS

LHCPG uses the FAC-1 standard form of contract to manage our frameworks. The LHCPG pro forma, which should be read in conjunction with the FAC-1 in published form, details the terms and conditions that govern the operation of the framework, including the procedures to call off projects under

the framework. A free copy of the LHCPG proforma is available upon request. The FAC-1 in standard published form can be purchased at a negotiated rate from ACA, by emailing [office@acarchitects.co.uk](mailto:office@acarchitects.co.uk) and quoting discount code reference: LHCFAC2516102017.

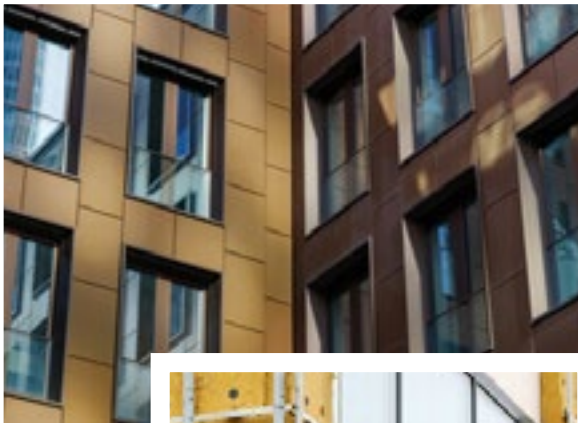
# THE PROCESS OF USING OUR FRAMEWORK







CYNGHRAIR  
CAFFAEL  
CYMREIG | WELSH  
PROCUREMENT  
ALLIANCE



**WPA**

Tredomen Innovation & Technology Centre |  
Tredomen Park | Ystrad Mynach | Hengoed | CF82 7FQ

In association with:

**LHC**  
PROCUREMENT GROUP

02922 802 476



info@welshprocurement.cymru



@WelshProcure



linkedin.com/company/wpa-welsh-procurement-alliance

