



CYNGHRAIR  
CAFFAEL  
CYMREIG

WELSH  
PROCUREMENT  
ALLIANCE

**WORKING  
FOR  
WALES**



FIRE RISK ASSESSMENT ROOFING  
WINDOWS AND DOORS HOUSING CONSTRUCTION  
PUBLIC BUILDINGS MODULAR BUILDINGS  
**PROCUREMENT**  
DECARBONISATION HOUSE REFURBISHMENT  
KITCHEN UNITS **CONSTRUCTION CONSULTANCY**  
PROPERTY PROTECTION





CONTENTS

WORKING FOR WALES   ABOUT WPA	03
WPA   PRODUCTS AND SERVICES	04
COMMUNITY BENEFITS THROUGH PROCUREMENT	07
WHY BUY VIA THE WELSH PROCUREMENT ALLIANCE?	08
NEW SOCIAL HOUSING	11
ENVIRONMENTAL NEWS   DECARBONISATION	14
BENEFITS OF OFFSITE CONSTRUCTION	16
THE PROCESS   HOW IT WORKS	17
EASY GUIDE TO USING WPA FRAMEWORKS	18
PARTNER PROFILING	19
EXECUTIVE COMMITTEE	19
CONTACT	20
WPA SOCIAL VALUE STATEMENT	21

If you would like any of the content of this brochure translating into Welsh please ask.

Os hoffech i unrhyw ran o'r gynnwys y pamffled hwn gyfieithu i'r Gymraeg gofynnwch os gwelwch yn dda.

WORKING FOR WALES

ABOUT WELSH PROCUREMENT ALLIANCE (WPA)

The Welsh Procurement Alliance (WPA) provides compliant frameworks which can be used by local authorities, social landlords and other public sector bodies to procure works, products and services for the construction, refurbishment and maintenance of social housing, schools and public buildings.

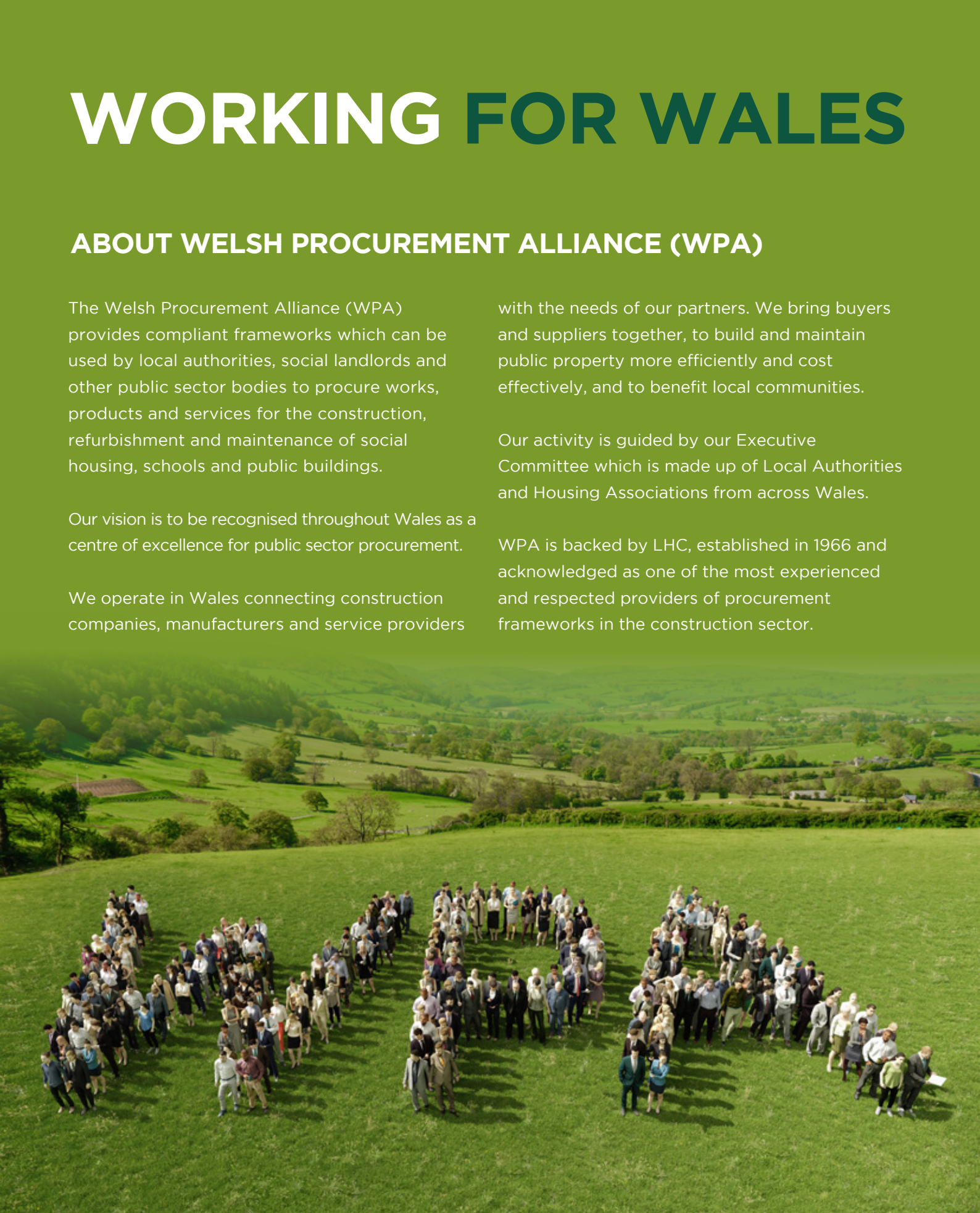
Our vision is to be recognised throughout Wales as a centre of excellence for public sector procurement.

We operate in Wales connecting construction companies, manufacturers and service providers

with the needs of our partners. We bring buyers and suppliers together, to build and maintain public property more efficiently and cost effectively, and to benefit local communities.

Our activity is guided by our Executive Committee which is made up of Local Authorities and Housing Associations from across Wales.

WPA is backed by LHC, established in 1966 and acknowledged as one of the most experienced and respected providers of procurement frameworks in the construction sector.





# PRODUCTS AND SERVICES AVAILABLE THROUGH WPA

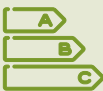
This is an outline of our products and services with a list of users.

## CONTRACTOR FRAMEWORKS AND DPS



### WHOLE HOUSE REFURBISHMENT INCLUDING KITCHEN & BATHROOM REPLACEMENTS

- Bron Afon Community Housing
- Flintshire Council
- Linc Cymru
- Newport City Homes
- Powys Teaching Health Board
- Valleys to Coast Housing (V2C)
- Wrexham Council



### DECARBONISATION AND ENERGY EFFICIENCY MEASURES

- Bron Afon Community Housing
- Caerphilly County Borough Council
- Cardiff Community Housing
- First Choice Housing Association
- Hafod Housing Association
- Newport City Homes
- United Welsh Housing Association
- Wales & West
- Wrexham Glyndwr University



### PUBLIC BUILDINGS, SCHOOLS AND COMMUNITY BUILDINGS REFURBISHMENT AND NEW-BUILD

- Blaenau Gwent County Borough Council
- Flintshire Council
- HMRC - Wales
- Merthyr Tydfil CBC
- Newport Norse



### MODULAR BUILDINGS (NON-HOUSING)

- Caerphilly County Borough Council
- Cardiff Council
- Cardiff University
- Gwent Police
- HMRC - Wales
- Pembrokeshire County Council
- Swansea City Council



### HOUSING CONSTRUCTION (INCLUDING MMC)

- Adra
- Bron Afon Community Housing
- Clwyd Alyn Housing Association
- Grwp Cynefin
- Gwynedd Council
- Hafod Housing Association
- Isle of Anglesey Council
- Linc Cymru
- Newport City Homes
- North Wales Housing Association
- Pembrokeshire County Council
- Pobl Group
- Tai Calon
- Trivallis
- Vale of Glamorgan Council

## ELEMENTAL FRAMEWORKS



### PVC-U WINDOWS AND DOORS

- Ateb Group
- Clwyd Alyn
- Flintshire Council
- Linc Cymru
- Melin Homes
- Merthyr Valleys Homes
- Monmouthshire Housing Association
- Newport City Homes
- NHS Wales Shared Services Partnership
- North Wales Housing Association
- Pobl Group
- South Wales Police
- Tai Calon Community Housing
- Tai Tarian
- Vale of Glamorgan Council
- Valleys to Coast Housing (V2C)



### COMPOSITE DOORS AND FIRE DOORS

- Bron Afon Community Housing
- Clwyd Alyn
- Flintshire Council
- Monmouthshire Housing Association
- Newport City Homes
- Pembrokeshire County Council
- Tai Calon Community Housing
- Trivallis
- Vale of Glamorgan Council



### COMMUNAL ENTRANCE DOORS

- Cardiff Community Housing Association
- Flintshire Council
- Grwp Cynefin
- Hafod Housing Association
- Newport City Homes
- Vale of Glamorgan Council
- Wales & West Housing



### ALUMINIUM WINDOWS AND DOORS

- South Wales Police
- Wrexham Council
- Powys Teaching Health Board



### ROOFING

- Aberystwyth University
- Bron Afon Community Housing
- Cardamarthenshire County Council
- Flintshire Council
- Hafod Housing Association
- Newport City Homes
- Powys Teaching Health Board
- Trivallis
- Vale of Glamorgan Council
- Wrexham Council



### KITCHEN UNITS

- Ateb Group
- Clwyd Alyn Housing Association
- Flintshire Council
- Hafod Housing Association
- Linc Cymru
- Merthyr Valleys Homes
- National Trust (Wales)
- Swansea City Council
- Vale of Glamorgan Council
- Wales & West
- Wrexham Council

For information on all WPA products and services please refer to the website [www.welshprocurement.cymru](http://www.welshprocurement.cymru) where you can access and download individual Procurement Guides for each framework and DPS.

COMPLIANCE AND SERVICES FRAMEWORKS



CONSTRUCTION CONSULTANCY SERVICES  
INCLUDING ARCHITECTS, STRUCTURAL AND CIVIL ENGINEERS, QUANTITY SURVEYORS, CLERK OF WORKS, HEALTH AND SAFETY ADVISORS PLUS A COMBINED CONSULTANCY SERVICE

- Bron Afon Community Housing
- Caerphilly County Borough Council
- Cardiff Council
- Development Bank of Wales
- Hafod Housing Association
- Merthyr Valley Homes
- Newport City Homes
- Powys Teaching Health Board
- Swansea Bay University Health Board
- Trivallis
- Valleys to Coast Housing (V2C)
- Welsh Government



LEGIONELLA CONTROL AND WATER MANAGEMENT

- Blaenau Gwent County Borough Council
- Carmarthenshire County Council
- Mid and West Wales Fire and Rescue Service
- Tai Tarian
- Wrexham Council
- Wrexham Glyndwr University



VACANT PROPERTY PROTECTION

- Blaenau Gwent County Borough Council
- Caerphilly County Borough Council
- Cynon Taf Housing Association
- Flintshire Council
- Monmouthshire Housing Association
- Pobl Group
- Taff HA
- Tai Calon Community Housing
- Valleys to Coast Housing (V2C)
- Wales & West
- Wrexham Council



ASBESTOS WORKS AND SERVICES

- Cardiff and Vale University Health Board
- Companies House
- Hafod Housing Association
- Merthyr Valleys Homes
- Newport Norse
- Pembrokeshire County Council
- Pobl Group
- Trivallis



FIRE RISK ASSESSMENT AND PASSIVE FIRE MEASURES

- Newport City Homes
- Newport Norse
- Pembrokeshire County Council
- Pobl Group
- Tai Tarian



WPA are now working in collaboration with Consortium Procurement and the following services are provided via Consortium Procurement frameworks:

- Technology enabled care
- Furniture services
- Stair-lifts and lifting equipment
- Adaptations and fixed lifting equipment
- Passenger lifts
- Property safety and security
- Commercial insurance
- Tenants contents insurance
- Electronic payment services

For a full, up-to-date list of CP services visit [www.consortiumprocurement.org.uk](http://www.consortiumprocurement.org.uk)



COMMUNITY BENEFITS THROUGH PROCUREMENT

Over and above evaluating the Appointed Companies in relation to general corporate, social responsibilities, we also encourage our clients to include project-specific community benefits in their call-off contracts.

In addition, WPA have established the **WPA Community Benefit Fund**. The fund is being utilised by our Executive Committee members to reinvest funds generated by WPA activity back into their own communities.

WPA work in partnership with **Community Foundation Wales** who work alongside our members to get the best possible return for their communities. Not only are the projects assessed with regards to benefits achieved and monetary investment, they are also assessed on the social impact they have on the wider communities.

WPA Community Benefit Fund allocations | 2020-21  
Summary of the projects funded:

Organisation	Amount Awarded	Project Summary
Bron Afon Community Housing	£10,000	To provide an opportunity for local communities to apply for funding for local projects, planned and delivered by themselves for their communities.
Caerphilly County Borough Council	£20,000	To provide a universal gateway model that provides a central coordination and response team, for those at risk of suffering from disadvantage, alongside a project to allow community assets to thrive.
Carmarthenshire County Council	£20,000	To provide an innovative multi-organisation initiative that offers young people training in construction, via an opportunity to gain a modern apprenticeship with either local contractors or Carmarthenshire County Council whilst working on a community based project.
Linc Cymru	£10,000	To work with existing communities and tenants to improve green spaces and enable access to community grown food. The communities identified (Sirhowy Court and Morrison Court) are a mixture of young families and single people, with a small number of older people's flats.
Merthyr Valley Homes	£28,600	To provide a variety of different projects across the Local Authority, which have been designed to improve the lives of the local community.
Pobl Trust	£10,000	To provide a micro-grants funding scheme to support community initiatives and organisations working within the areas that Pobl operates in South and West Wales.
Trivallis	£10,000	To provide a Food Fund, a grant funding provision allowing community groups to apply for funding for food for local, vulnerable communities in Rhondda Cynon Taf.





# WHY BUY VIA THE WELSH PROCUREMENT ALLIANCE?

## 10 REASONS TO CHOOSE WPA

### 01 Compliance with UK Procurement Rules

- WPA appoints its approved companies in line with UK Procurement Rules.
- Our team of procurement experts follow a precise tender programme in strict accordance with UK public sector procurement rules; from initial advertisements, through issue of documents and evaluation of companies and on to final award.

#### Benefit:

This gives our clients peace of mind regarding compliance issues.

### 02 Fast and Efficient Procurement

- Once WPA Appointed Companies have been approved for inclusion on a WPA framework, the process of calling-off projects and commissioning work is straightforward and flexible.
- Terms and rates have been pre-agreed and when competition is required, there is flexibility in the call-off methods available. Upon successful confirmation, projects can start as soon as required.

#### Benefit:

This saves our clients considerable amounts of time in the procurement phase and speeds up mobilisation.

### 03 Technical Expertise and Development of Specifications

- WPA are part of the LHC Group, established in 1966, and who, over five decades, have developed and shaped their service to meet the evolving needs of the public sector. Our technical expertise is built on continuous research by our team who consult with our clients on the outcomes they need and with industry experts and suppliers on the range of available solutions.
- The specifications for all product areas have been fully researched and developed before the framework tender process is undertaken.
- Our technical team participate on the UK and EU Standards Committees to ensure that specifications are continually updated to reflect all current and future regulations.

#### Benefit:

Significant savings to your organisation which would have to commit much resource to research, meetings, discussions, drafting and approval of various product specifications. Technical advice is available from WPA and LHC throughout the term of any arrangement.

### 04 Experienced Suppliers and Contractors

- A key criterion for the appointment of all WPA companies is their experience in dealing with social housing and other public sector contracts.

#### Benefit:

All WPA Appointed Companies have committed teams to ensure that any inconvenience to residents and other end users is managed positively.

### 06 Added Value Services

- WPA are able to provide procurement advice and technical support relating to your individual project requirements. We can assist you at various stages from inception to completion. Talk to our team if you would like help with any of the following:
  - Technical advice on WPA frameworks
  - Project specifications - adhering to regulations and standards
  - Planning and Building Regulations advice including self-certification schemes
  - Support through the call-off process
  - Independent evaluation of tenders as part of your client team
  - Post-tender mathematical checks to ensure price validity
  - Price validations - verifying prices against framework rates
  - Attendance at prestart meetings and subsequent project monitoring
  - Interventions should contractors not perform
- Liaise with Appointed Contractors to share best practice
- Liaise with other WPA clients to facilitate collaboration where required

#### Benefit:

Extends the capability of your in-house procurement team and gives peace of mind regarding potential issues with suppliers.

### 05 Project Quality

- On appointment of any WPA company, the WPA would be available to take an active role in developing the partnership and participate in core team meetings throughout the term of the agreement.
- Throughout the term of the contract, WPA can work with your project team to monitor the performance of the Appointed Company.

#### Benefit:

WPA work with you to ensure that the programme of work is delivered in line with your expectations and where there is any deviation from target performance, WPA will contact the Appointed Company directly to agree remedial action.

### 07 Value for Money

- Tenders are evaluated on a price/quality model where both factors are given appropriate status.
- Evaluations also include regional capability and
- WPA can validate quotations from our suppliers to ensure that rates used are in line with the framework terms and conditions.

#### Benefit:

WPA is recognised by its users for delivering and demonstrating Value for Money through all of its frameworks.



### 08 Financial Information

- We use CreditSafe alerts and utilise Euler to monitor the financial performance of all of our Appointed Companies.
- Before each call-off project, at the Expression of Interest stage, where we have been alerted to potential financial issues, we run our own checks and will talk directly to the Appointed Company's CFO or FD to understand the issues behind the numbers.

#### Benefit:

Peace of mind regarding potential financial issues with suppliers before you enter into a contract.

### 10 Community Benefit and Social Value

- As a not for profit organisation, over and above evaluating the Appointed Companies in relation to general corporate, social responsibilities prior to awarding them to our frameworks we also encourage our clients to include project specific community benefits in their call-off contracts.
- In addition, WPA have established the WPA Community Benefit Fund which is utilised by our Executive Committee members to reinvest back into their own communities.
- WPA work in partnership with Community Foundation Wales (CFW) who work alongside our members to get the best possible return for their communities. Community benefit projects we fund are assessed with regards to benefits achieved and monetary investment plus the social impact they have on the wider communities.

#### Benefit:

WPA member organisations benefit from an end-of-year distribution of WPA surpluses.

### 09 Working for Wales

- WPA was set up in 2017 to address Welsh needs, standards and aspirations for public sector procurement. Since then, WPA has established itself in the Welsh public sector as a trusted procurement provider and continues to innovate and grow.
- By increasing our membership and the spend via our frameworks, we are attracting more suppliers from across Wales to be part of our frameworks.
- WPA actively encourage Welsh suppliers and contractors to bid to become WPA Appointed Companies.
- We can only appoint companies that apply of course, but we are passionate about encouraging the growth of the Welsh industries that we are connected to.

#### Benefit:

The more companies from Wales that become WPA Appointed Companies the more of the 'Welsh Pound' spent through our frameworks stays in Wales to help improve our communities.





# WPA- HELPING TO BUILD NEW HOMES

Welsh Government has set a target of building 20,000 new affordable homes by the end of the term of this parliament and WPA is aiming to help our clients to deliver the numbers of new-build homes required within that timescale.

**Neil Barker, WPA Director says:** “There is clearly an appetite within the Councils and Housing Associations across Wales to build more affordable homes for the social sector. Often it isn’t clear how this can be done efficiently, to the required timescales and at the right price. Factor in the need to build energy efficient homes to help with fuel poverty and you can see how tricky the whole thing can become.”



Our aim at WPA is to provide procurement solutions which help social landlords and the Councils across Wales by providing efficient access to pre-tendered, fully evaluated construction companies.

**The WPA frameworks and the Dynamic Purchasing System (DPS) for new-build housing offer traditional build methods and also offsite ‘innovative’ methods.**

**Use WPA frameworks and DPS to:**

- Reduce procurement timescales
- Demonstrate value for money
- Meet required quality and energy efficiency standards
- Ensure compliance with procurement rules

WPA technical support is available on call-off projects to help ensure projects are delivered in line with expectations. Additional social and community benefits can be built into projects at call-off stage.



## Dynamic Purchasing System for Housing Construction – South Wales

The DPS was developed following consultation with Welsh Government and the Councils and Housing Associations across South and Mid Wales to provide a range of procurement options. We have appointed a number of contractors in each county to deliver projects of varying sizes.

Please ask WPA for information on the regional Lots and workstreams and the companies appointed to them. The DPS includes options for the delivery of homes using Modern Methods of Construction (MMC).

## Framework for Housing Construction – North Wales

The North Wales framework provides access to a choice of mainly North Wales based suppliers that we are confident will collectively meet and exceed the expectations of our clients.

The framework includes the option for a client to directly award a construction project associated with a land purchase element, where the company has a direct interest in the land.



## How does a DPS differ from a Framework?

**Framework**

- Maximum duration of 4 years
- Direct award permissible
- Fixed list of suppliers
- Typically harder for SMEs to access

**DPS**

- No maximum time limit
- No direct award (further competition only)
- Flexible - suppliers can join during the lifetime of the DPS
- Increased accessibility for SMEs





The Welsh Government has made a commitment to reach net zero carbon emissions by 2050 and the report 'Better Homes, Better Wales, Better World – decarbonising existing homes in Wales' presented by the independent review panel chaired by Chris Jofeh in July 2019 sets out how the housing sector can contribute to this aim.



## DECARBONISATION AND ENERGY EFFICIENCY (N8)

### ENERGY EFFICIENCY MEASURES

Wales has some of the oldest and least thermally efficient housing stock in the UK and Europe. 32% of the Welsh housing stock was built before 1919, when there were no construction standards in terms of thermal performance. Just 10% of Welsh homes were built in the last 18 years, during which time energy performance requirements have changed dramatically.

The scale of the retrofit programme required for existing homes provides a massive challenge but also creates an opportunity for a major investment programme that would benefit communities throughout Wales.

The review suggests that homes in social ownership and homes in fuel poverty (a total of 300,000) should be brought up to the standard by 2030.

Costs are estimated at between £500m and £1bn a year for those homes, at 30,000 a year over the next 10 years.

WPA are aiming to assist with delivering decarbonisation through our Decarbonisation and Energy Efficiency frameworks. See the WPA website or contact our office for more information on how we can help your organisation with your decarbonisation plans.

- External wall insulation
- Cavity wall insulation
- Internal wall insulation
- Insulation materials (loft)
- Biomass boilers
- Solar PV with battery storage
- Air to water heat pumps
- District heating interface units
- Traditional boilers
- Rainscreen and cladding
- Combined heat & power (CHP) or combined cooling & heat & power (CCHP)
- Gas absorption heat pumps
- Boiler optimisation technologies
- Lighting controls
- EV charging infrastructure
- Solar thermal systems
- Building energy management systems
- Floor insulation
- Ground source heat pumps
- Commercial boilers
- Electric heaters

## ENERGY EFFICIENCY CONSULTANCY (N8C)

### CORE CONSULTANCY MEASURES

#### Building Energy Management

Building Energy Policy & Strategy Development

Energy Surveys and Audits

Monitoring and Targeting

Independent Report on Metering Arrangements (IRMA)

Chartered Surveyors Reports

Domestic and non-domestic BREEAM Assessments (for existing buildings)

Funding and Finance

#### Building Energy Certificates

Display Energy Certificates (DEC) and Advisory Report (AR)

Energy Performance Certificates (EPC) Domestic

Energy Performance Certificates (EPC) non-Domestic

#### Project Management

Project Manager

Clerk of Works

Health & Safety

Principal Designer duties

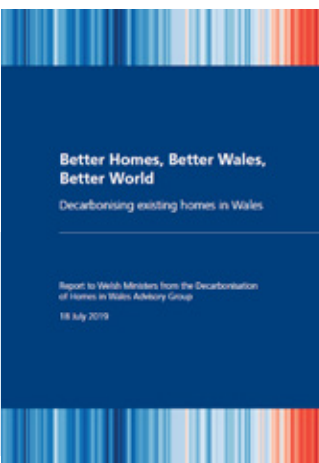
Health & Safety Advisors

#### Asset Management, Project Specification

Energy Stock Condition Surveys and Reports

Product Specification and Procurement

Quantity Surveyors



Left: Chris Jofeh's decarbonisation report

Below: An illustration of the annual average temperatures

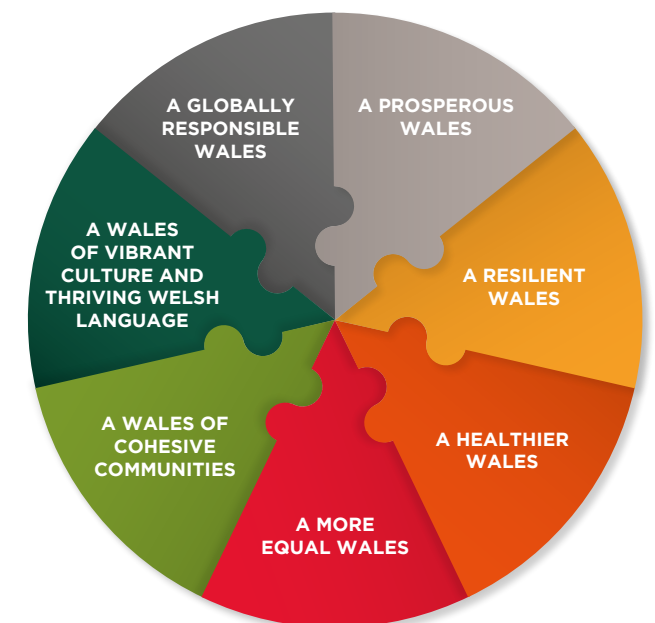
for the World from 1850-2018 using data from the UK Met Office: [www.showyourstripes.info/](http://www.showyourstripes.info/)

The Well-being of Future Generations Act gives us the ambition, permission and legal obligation to improve our social, cultural, environmental and economic well-being.

The Well-being of Future Generations Act requires public bodies in Wales to think about the long-term impact of their decisions, to work better with people, communities and each other, and to prevent persistent problems such as poverty, health inequalities and climate change.

Welsh Procurement Alliance is mindful to ensure that the Future Generations Act obligations are embedded into all our activity.

### WELL-BEING GOALS



## BENEFITS OF OFFSITE CONSTRUCTION:

As a sector we are beginning to understand the potential benefits of using offsite construction for new-build social housing.

There are severe labour shortages in the construction industry that are only predicted to become worse. The opportunity exists now for a new Welsh industry to be developed to meet the growing demand for new homes across the country. Moving the building process away from the physical site and into a controlled factory environment has multiple advantages.

- Improved working conditions and Health and Safety
- Easier to train workers in a factory environment
- Better quality control
- Reduced snagging and defects
- Reduced material waste
- No weather delays

- Faster construction = less time on site
- Reduced road traffic movements
- Reduced disruption around the site
- Reduced energy use on site

### Offsite homes in use

- Energy efficiency built-in
- Reduced carbon emissions
- Lower energy bills for residents

### The offsite industry is working hard to ensure perceptions are changed regarding:

- Historic connotations regarding the quality of post-war 'pre-fabs'
- Finance – mortgagability
- Over-standardisation required to make offsite cost effective



Talk to WPA about the offsite options available when you are looking at your next new development. Please call 02922 802 476.



## WPA delivers instant access to compliantly tendered and quality evaluated, products, services and contractors.

### Framework tender and award

WPA, and the technical specialists at LHC, carry out research into the products and services we identify as being required by our public sector clients.

From this feasibility stage we draw up performance specifications and the tender documents.

- PINs and Contract Notices are published on Find a Tender (previously in OJEU) and on the Sell2Wales website.

Companies have open access to the tender and offer documentation (ITT) and are asked to respond to assessment questions covering:

- Company standing
- Financial standing
- Employment practices
- Environmental awareness
- Sustainability and social value
- Capacity and geographical range
- Technical and service capability
- Quality systems management capability
- Testing and certification
- Experience of supply to the public sector
- Specifications for products and services
- Pricing

A detailed evaluation report is prepared which shows the following for each tenderer:

- Weighted score under each heading
- Value for money index

### The Appointed Companies

Companies are appointed based on their scores in the tender evaluation report.

Our aim is to give our partners a choice of approved framework suppliers to work with.

Numbers vary per framework in line with anticipated demand and subject to the number of qualifying suppliers that can adhere to our strict criteria.

- All suppliers are notified of the results and the unsuccessful tenderers can choose to have a debrief to help improve future offers
- Contract Award Notices are published on Find a Tender (previously in OJEU) and on the Sell2Wales website

### Awarding 'call-off' contracts

When members and clients are ready to choose a framework supplier for an individual project, they should start the process by talking to our team. We can help with specifications prior to the start of a call-off procedure and encourage dialogue with framework suppliers. Then WPA will coordinate either:

- A mini competition involving the eligible appointed companies that have declared an interest in the project, or
- A direct award made to a single company, with justifiable reasoning, without reopening competition. (WPA can provide the relevant framework evaluation report to assist with this decision.)

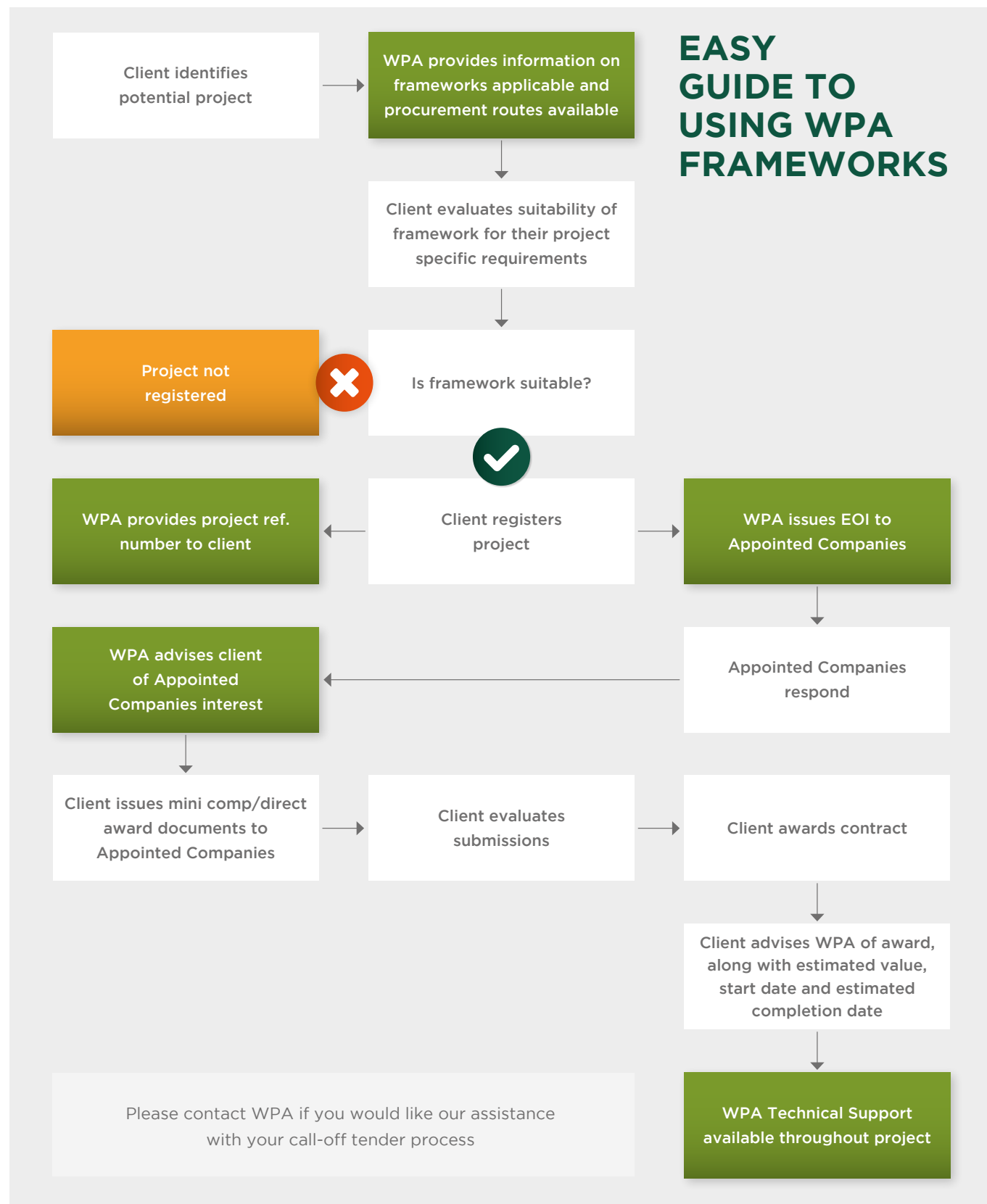
### Project and programme support from WPA

WPA provides support and technical assistance throughout the duration of a project or programme of works, as required:

- To ensure high quality standards are maintained
- Service levels are fulfilled
- Delivery periods are met

We actively pursue feedback on our projects in order to monitor the outcomes and strive to continually improve everything we do. We will be happy to meet you during the life of a project and after project completion to discuss how WPA, as well as the framework suppliers, could improve the level of performance.





WPA procurement frameworks can be used by all publicly funded organisations in Wales. All contract notices are issued by LHC on behalf of the Welsh Procurement Alliance (WPA)

**WPA frameworks can be used by:**

- Welsh Unitary authorities
- Registered social landlords

in addition the following organisations that operate in the public sector are also eligible to use our services:

- Education authorities
- Publicly funded schools
- Universities
- Colleges
- Further education establishments
- NHS
- Emergency services
- Central Government departments and their agencies as listed

Some WPA frameworks are designed for specific sectors so only those organisations within the specified sector can use them

### FLEXIBLE FRAMEWORKS

Our flexible frameworks are designed with Partners interests in mind:

- Addressing local, financial, quality and sustainability objectives
- Compliant with EU and UK procurement rules
- Options on technical specifications

### A BENEFICIAL PROCESS

- WPA partners will save many hours every year by using our frameworks
- Our partners gain back valuable time to focus on the needs of their communities

### FINANCIAL REBATE

- WPA partners are eligible to receive a share of any surplus generated in a financial year
- WPA partners receive a pro-rata share based on their total spend during the qualifying period

### EXECUTIVE COMMITTEE

WPA provide a forum for collaboration for public sector spending on construction, refurbishment and maintenance of public buildings





## TEAMWORK AND A COMMITMENT TO SUCCEED IS AT THE HEART OF EVERYTHING WE DO.

In collaboration with the technical and procurement team at LHC, the WPA is developing frameworks specifically for the public sector in Wales. Our agenda is driven by the WPA Executive Committee representing our Welsh clients.

Focused on achieving goals set by the Well-being of Future Generations (Wales) Act 2015, the WPA offers innovative solutions for the procurement of new-build and refurbishment contracts throughout Wales. We seek to work with the best contractors and suppliers and are encouraging Welsh companies to apply for places on the frameworks.

The WPA has also established a Community Benefits fund for its partners with income generated by procurement in Wales.

### Welsh Procurement Alliance (WPA)

Tredomen Innovation & Technology Centre  
Tredomen Park  
Ystrad Mynach  
Hengoed  
CF82 7FQ

info@welshprocurement.cymru  
02922 802 476  
[www.welshprocurement.cymru](http://www.welshprocurement.cymru)



**Neil Barker**  
**Director**

neil.barker@welshprocurement.cymru  
**07786 730867**



**Ibrar Mian**  
**Technical Support Manager**

ibrar.mian@welshprocurement.cymru  
**07487 515824**



**Andrew Hamar**  
**Client Support Manager**

andrew.hamar@welshprocurement.cymru  
**07985 219463**



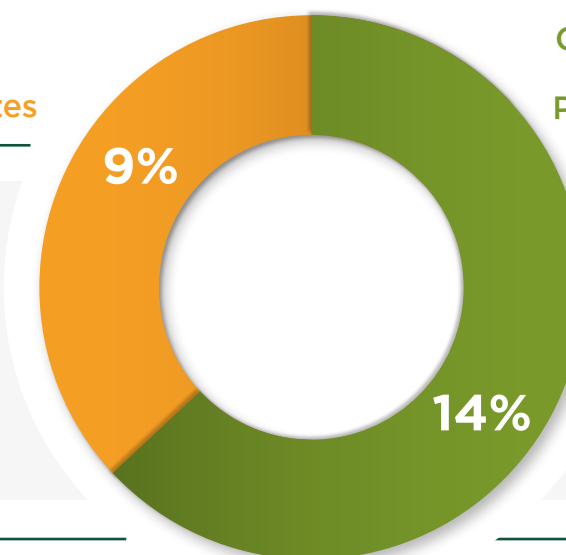
**Mali Hill**  
**Senior Client Research Officer**

mali.hill@welshprocurement.cymru  
**07507 973306**

Rebates

Community  
Benefit  
Programme

23% of income generated by WPA activity during 2020-21 was returned to our clients as rebates or via the WPA Community Benefit Fund.



## WPA SOCIAL VALUE STATEMENT

LHC and its regional organisations are not for profit providers of procurement and delivery solutions to all public sector organisations.

Surpluses are reinvested into the communities in which we operate to achieve improved social value outcomes in accordance with our primary goal – ‘Working together to deliver better buildings, homes and communities’.

We work together with our members, clients, suppliers, and communities to ensure social value is delivered in many ways:

**4** To identify priority areas for local community benefit programmes funded by our surpluses.

WPA operate in Wales connecting construction companies, manufacturers and service providers with the needs of our clients. We bring buyers and suppliers together, to build and maintain public property more efficiently and cost effectively, and to benefit local communities.

Our activity is guided by our Executive Committee which is made up of Local Authorities and Housing Associations from across Wales.

As a not-for-profit organisation, surplus generated by our activity is returned to communities either via rebates to clients or via our WPA Community Benefit Fund, managed in partnership with Community Foundation Wales. Each year, around £100,000 is being invested in community projects. Projects are assessed with regards to benefits achieved, monetary investment and the social impact they have on the wider communities.

- 1** To develop organisational policies to promote improved social, economic and environmental outcomes.
- 2** To look at the ways and means by which social value can be achieved on all projects delivered through our frameworks, bearing in mind that each project and context can be very different.
- 3** To define a standard set of outcomes on all projects to ensure that additional value is generated for the communities.

## WPA SOCIAL LINKS



**WPA**  
(Welsh Procurement Alliance)



**Welsh Procurement**  
@WelshProcure



**#InWalesForWales**





CYNGHRAIR  
CAFFAEL  
CYMREIG | WELSH  
PROCUREMENT  
ALLIANCE

In association with:

**LHC**  
Trusted procurement for  
better buildings and homes



The WPA is continually investing in its infrastructure and forging new partnerships with professional suppliers and contractors throughout Wales. Our Framework Agreements are also developing to meet the needs of our discerning membership and ultimately the needs of the Welsh communities we serve. For the very latest information on the WPA, please visit our website [www.welshprocurement.cymru](http://www.welshprocurement.cymru)

**Welsh Procurement Alliance (WPA)**

Tredomen Innovation & Technology Centre  
Tredomen Park | Ystrad Mynach | Hengoed | CF82 7FQ  
E: [info@welshprocurement.cymru](mailto:info@welshprocurement.cymru) | T: 02922 802 476