



CYNGHRAIR  
CAFFAEL  
CYMREIG | WELSH  
PROCUREMENT  
ALLIANCE

# Consultancy Services

26TH APRIL 2023 - 25TH APRIL 2027



CS1 Framework Guide

Working together to deliver better  
buildings, homes and communities

[welshprocurement.cymru](https://welshprocurement.cymru)



WPA provides compliant frameworks and Dynamic Purchasing Systems (DPS) which can be used by local authorities, social landlords and other public sector bodies to procure works, products and services for the construction, refurbishment and maintenance of social housing, schools and public buildings. Our vision is to be recognised throughout Wales as a centre of excellence for public sector procurement.

We operate in Wales connecting construction companies, manufacturers and service providers with the needs of our clients. We bring buyers and suppliers together, to build and maintain public property more efficiently and cost effectively, and to benefit local communities.

Our activity is guided by the WPA Committee which is made up of Local Authorities and Housing Associations from across Wales.

WPA is backed by LHC, a not-for-profit organisation, governed by public law and a central purchasing body providing procurement services in the UK, since 1966. All Contract Notices are issued on behalf of the WPA by LHC, who have an in-house team of technical procurement experts that produce and manage the frameworks.

WPA aims to deliver solutions for compliance, quality and best value and provides procurement and technical support and advice throughout the duration of our clients' projects. Any organisation that is publicly or partially publicly funded is eligible to utilise our frameworks.

If you would like any of the content of this brochure translated into Welsh please ask. Os hoffech i unrhyw ran o'r gynnwys y pamffled hwn gyfieithu i'r Gymraeg gofynnwch os gwelwch yn dda.

### Welsh Procurement Alliance (WPA)

Tredomen Innovation & Technology Centre | Tredomen Park | Ystrad Mynach | CF82 7FQ

02922 802 476

info@welshprocurement.cymru

WPA (Welsh Procurement Alliance)

## ABOUT THIS FRAMEWORK

CN 2022/S 000-022124, CAN 2023/S 000-012075

This WPA framework has been developed to provide a compliant and efficient procurement route to market for local authorities, social landlords and other public sector bodies whilst offering the ability to achieve value for money. This framework offers a comprehensive range of high-quality consultancy services across multiple disciplines.

Suitable for public sector projects of all sizes, this framework will enable organisations to access high quality pre-approved consultancy service providers who can deliver projects across a range of public buildings including but not limited to:

- Publicly funded schools, universities, and colleges
- NHS healthcare buildings
- Fire, ambulance, and police stations
- Other public buildings and associated works
- Residential properties, including mixed-use developments
- Infrastructure projects
- Student accommodation
- Commercial to residential conversions
- Community buildings
- Public offices



The tender was carried out in strict accordance with the UK public sector procurement rules. Places on the framework were awarded to 72 different suppliers in four workstreams and across four regional lots.

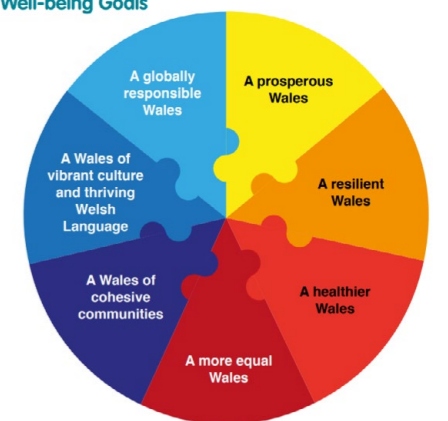
The term of the framework is from **26th April 2023 to 25th April 2027**. However, individual call-off projects can be completed beyond the four-year duration of the framework as long as a contract is in place prior to the framework expiry date.

### Well-being of Future Generations

The Well-being of Future Generations Act gives us the ambition, permission and legal obligation to improve our social, cultural, environmental and economic well-being.

The Well-being of Future Generations Act requires public bodies in Wales to think about the long-term impact of their decisions, to work better with people, communities and each other, and to prevent persistent problems such as poverty, health inequalities and climate change. Welsh Procurement Alliance is mindful to ensure that the Future Generations Act obligations are embedded into all our activity.

Well-being Goals



With the Well-being Goals in mind, WPA is committed to providing our clients with competitively tendered Framework Agreements for building works, goods and services and to delivering tangible social value and community benefits that meet local and regional needs. WPA work with our clients and appointed companies to ensure that wherever possible projects delivered using our frameworks leave a social legacy.

## APPOINTED COMPANIES



## APPOINTED COMPANIES



# WORKSTREAM OPTIONS

## WORKSTREAM 1 - PROFESSIONAL CONSULTANCY

This workstream comprises professional consultancy services to advise and assist with property development, planning, valuations, and design. The professional disciplines include, architecture, surveying, project management, cost consultants, master planning, and valuations (All Appointed Companies are listed alphabetically).

### Multi-disciplinary

North Wales	Mid Wales	South West and South East Wales
AHR Architects	Atkins Réalis	AHR Architects
Atkins Réalis	AHR Architects	Atkins Réalis
Bailey Partnership (Consultants)	Bailey Partnership (Consultants)	Bailey Partnership (Consultants)
Gleeds Cost Management	Gleeds Cost Management	Gleeds Cost Management
RAM Building Consultancy	Pentan Architects	Pentan Architects
Ridge and Partners	RAM Building Consultancy	RAM Building Consultancy
Stride Treglown	Ridge and Partners	Ridge and Partners
--	Stride Treglown	Stride Treglown

### Architectural Services (Buildings)

North Wales	Mid Wales	South West and South East Wales
AWW (Atkins, Walters & Webster)	AWW (Atkins, Walters & Webster)	Arcadis IBI Group*
Bailey Partnership (Consultants)	Bailey Partnership (Consultants)	AWW (Atkins, Walters & Webster)
Comprehensive Design Architects	Comprehensive Design Architects	Bailey Partnership (Consultants)
Emmett Russell Architects	Emmett Russell Architects	CMS Group
Eric Cole	Holmes Miller	Comprehensive Design Architects
jmarchitects	jmarchitects	Emmett Russell Architects
Powell Dobson Architects	One50studio	Holmes Miller
Ridge and Partners	Powell Dobson Architects	One50studio
Ryder Architecture	Ridge and Partners	Powell Dobson Architects
Stride Treglown	Stride Treglown	Ridge and Partners
Weston Williamson + Partners	Weston Williamson + Partners	Stride Treglown
--	--	Weston Williamson + Partners

\*South East Only

### Architectural Services (Landscaping)

North Wales	Mid Wales	South West and South East Wales
AHR Architects	AHR Architects	AHR Architects
Arcadis IBI Group	Arcadis IBI Group	Arcadis IBI Group
Assist Design	Assist Design	Assist Design
Ryder Architecture	Stride Treglown	Stride Treglown
Stride Treglown	--	--

# WORKSTREAM OPTIONS CONTINUED

### Construction project management and administration

North Wales	Mid Wales	South West and South East Wales
127 Joint Venture	127 Joint Venture	127 Joint Venture
Atkins Réalis	Atkins Réalis	Arcadis Consulting (UK)
Bailey Partnership (Consultants)	Bailey Partnership (Consultants)	Atkins Réalis
Brawdla	Blake Morgan	Blake Morgan
Gleeds Cost Management	Gleeds Cost Management	CMS Group
J4 Projects	J4 Projects	Gleeds Cost Management
RAM Building Consultancy	RAM Building Consultancy	J4 Projects
Rider Levett Bucknall UK	Rider Levett Bucknall UK	RAM Building Consultancy
TC Consult	TC Consult	Rider Levett Bucknall UK
Watts Group	Watts Group	Taylor Lewis
--	--	Watts Group

### Construction Contract Administration

North Wales	Mid Wales	South West and South East Wales
127 Joint Venture	127 Joint Venture	127 Joint Venture
AHR Architects	Alistair Burroughs Design Partnership	AHR Architects
Alistair Burroughs Design Partnership	Atkins Réalis	Alistair Burroughs Design Partnership
Atkins Réalis	Bailey Partnership (Consultants)	Arcadis Consulting (UK)
Bailey Partnership (Consultants)	Coreus Projects	Atkins Réalis
Coreus Projects	Earl Kendrick (London)	Bailey Partnership (Consultants)
Gleeds Cost Management	Gleeds Cost Management	CMS Group
RAM Building Consultancy	RAM Building Consultancy	Gleeds Cost Management
Rider Levett Bucknall UK	Rider Levett Bucknall UK	Rider Levett Bucknall UK
Watts Group	Watts Group	Taylor Lewis
--	--	Watts Group

### Employers Agent

North Wales	Mid Wales	South West and South East Wales
Alistair Burroughs Design Partnership	Alistair Burroughs Design Partnership	Arcadis Consulting (UK)
Atkins Réalis	Atkins Réalis	Bailey Partnership (Consultants)
Bailey Partnership (Consultants)	Bailey Partnership (Consultants)	CMS Group
Currie & Brown UK	Currie & Brown UK	Gleeds Cost Management
Gleeds Cost Management	Gleeds Cost Management	Hollis Global
Hollis Global	Hollis Global	J4 Projects
J4 Projects	J4 Projects	Kendall Kingscott
RAM Building Consultancy	RAM Building Consultancy	RAM Building Consultancy
Rider Levett Bucknall UK	Rider Levett Bucknall UK	Rider Levett Bucknall UK
RPA Quantity Surveyors	RPA Quantity Surveyors	Strongs Partnership
Strongs Partnership	Strongs Partnership	Taylor Lewis
Watts Group	Watts Group	Watts Group

### Planning services

North Wales	Mid Wales	South West and South East Wales
Asbri Planning	Asbri Planning	Asbri Planning
Bailey Partnership (Consultants)	Bailey Partnership (Consultants)	Bailey Partnership (Consultants)
Planning Potential	Kew Property Consultants	Kew Property Consultants
Stride Treglown	Planning Potential	Planning Potential
The Urbanists	Stride Treglown	Ridge and Partners
--	The Urbanists	Stride Treglown
--	--	The Urbanists

# WORKSTREAM

## OPTIONS CONTINUED

Master planning		
North Wales	Mid Wales	South West and South East Wales
Ridge and Partners	Ridge and Partners	Clague*
Ryder Architecture	Ryder Architecture	Ridge and Partners
Stride Treglown	Stride Treglown	Ryder Architecture
The Urbanists	The Urbanists	Stride Treglown
--	--	The Urbanists

\*South West Only

Principal designer		
North Wales	Mid Wales	South West and South East Wales
AHR Architects	AHR Architects	AHR Architects
Atkins Réalis	Atkins Réalis	Atkins Réalis
Bailey Partnership (Consultants)	Bailey Partnership (Consultants)	Cadarn Consulting Engineers
Cadarn Consulting Engineers	Cadarn Consulting Engineers	Kendall Kingscott
Coreus Projects	Coreus Projects	pdp architecture*
Positive Safety Solutions	Positive Safety Solutions	Positive Safety Solutions
Richard Jackson	Richard Jackson	Richard Jackson
Rider Levett Bucknall UK	Rider Levett Bucknall UK	Rider Levett Bucknall UK
Ryder Architecture	Ryder Architecture	Ridge and Partners
Watts Group	Watts Group	Ryder Architecture
--	--	Watts Group

\*South East Only

Civil and structural engineering		
North Wales	Mid Wales	South West and South East Wales
127 Joint Venture	127 Joint Venture	127 Joint Venture
Alistair Burroughs Design Partnership	Alistair Burroughs Design Partnership	Alistair Burroughs Design Partnership
Bailey Partnership (Consultants)	Bailey Partnership (Consultants)	Bailey Partnership (Consultants)
Cambria Consulting	Cambria Consulting	Cambria Consulting
Curtins Consulting	Curtins Consulting	Curtins Consulting
Kiloh Associates	Kiloh Associates	Kiloh Associates
Pell Frischmann Consultants	PHG Consulting Engineers	PHG Consulting Engineers
PHG Consulting Engineers	Richard Jackson	Richard Jackson
Richard Jackson	Ridge and Partners	Ridge and Partners
Ridge and Partners	--	--

Clerk of works		
North Wales	Mid Wales	South West and South East Wales
DRAC Consulting	DRAC Consulting	DRAC Consulting
Hickton Quality Control	Hickton Quality Control	Hickton Quality Control
IMG Quality Control	IMG Quality Control	IMG Quality Control
Rider Levett Bucknall UK	Rider Levett Bucknall UK	Rider Levett Bucknall UK
Ross Quality Control	Ross Quality Control	Ross Quality Control
--	--	Taylor Lewis

# WORKSTREAM

## OPTIONS CONTINUED

Building surveyor		
North Wales	Mid Wales	South West and South East Wales
AHR Architects	AHR Architects	AHR Architects
Atkins Réalis	Atkins Réalis	Atkins Réalis
Bailey Partnership (Consultants)	Bailey Partnership (Consultants)	Bailey Partnership (Consultants)
Brawdia	Brawdia	CMS Group
Coreus Projects	Coreus Projects	Coreus Projects
RAM Building Consultancy	Kendall Kingscott	Kendall Kingscott
Rider Levett Bucknall UK	RAM Building Consultancy	RAM Building Consultancy
--	Rider Levett Bucknall UK	Rider Levett Bucknall UK
--	--	Ridge and Partners
--	--	Taylor Lewis

Quantity surveyor		
North Wales	Mid Wales	South West and South East Wales
127 Joint Venture	127 Joint Venture	127 Joint Venture
Atkins Réalis	Atkins Réalis	Arcadis Consulting (UK)
Bailey Partnership (Consultants)	Bailey Partnership (Consultants)	Atkins Réalis
Coreus Projects	Coreus Projects	Bailey Partnership (Consultants)
Currie & Brown UK	Currie & Brown UK	CMS Group
Gleeds Cost Management	Gleeds Cost Management	Coreus Projects
Glyndwr Consulting	Glyndwr Consulting	Currie & Brown UK
Rider Levett Bucknall UK	Rider Levett Bucknall UK	Gleeds Cost Management
Ridge and Partners	Ridge and Partners	Glyndwr Consulting
RPA Quantity Surveyors	Strong's Partnership	Kendall Kingscott
Strong's Partnership	Watts Group	Ridge and Partners
Watts Group	--	Strong's Partnership
--	--	Taylor Lewis

Stock condition surveys		
North Wales	Mid Wales	South West and South East Wales
AHR Architects	AHR Architects	AHR Architects
Atkins Réalis	Atkins Réalis	Atkins Réalis
Brawdia	Brawdia	Brawdia
Coreus Projects	Coreus Projects	Coreus Projects
RAM Building Consultancy	RAM Building Consultancy	RAM Building Consultancy
Rand Associates Consultancy Services	Rand Associates Consultancy Services	Rand Associates Consultancy Services
Ridge and Partners	Ridge and Partners	Ridge and Partners
Watts Group	Watts Group	Watts Group

**WORKSTREAM 2 - MECHANICAL, ELECTRICAL AND PLUMBING (MEP) CONSULTANCY**

The services for each lot within this MEP workstream covers building services elements such as mechanical, electrical and plumbing systems (All Appointed Companies are listed alphabetically).

Mechanical, electrical and plumbing		
North Wales	Mid Wales	South West and South East Wales
Bailey Partnership (Consultants)	Bailey Partnership (Consultants)	Bailey Partnership (Consultants)
Butler & Young Services	Butler & Young Services	Butler & Young Services
Couch Perry & Wilkes	Clear Safety Services	Clear Safety Services
DRAC Consulting	Couch Perry & Wilkes	Couch Perry & Wilkes
McCann & Partners	DRAC Consulting	DRAC Consulting
Ridge and Partners	McCann & Partners	McCann & Partners
Wallace Whittle	Ridge and Partners	Method Consulting
Watts Group	Wallace Whittle	Ridge and Partners
--	Watts Group	Wallace Whittle
--	--	Watts Group

Building services engineer (HVAC)		
North Wales	Mid Wales	South West and South East Wales
Bailey Partnership (Consultants)	Bailey Partnership (Consultants)	Bailey Partnership (Consultants)
Butler & Young Services	Butler & Young Services	Butler & Young Services
DRAC Consulting	DRAC Consulting	DRAC Consulting
McCann & Partners	McCann & Partners	McCann & Partners
Ridge and Partners	Ridge and Partners	Method Consulting
Wallace Whittle	Wallace Whittle	Ridge and Partners
Watts Group	Watts Group	Wallace Whittle
--	--	Watts Group



**WORKSTREAM 3 - ASSET MANAGEMENT CONSULTANCY**

The services for each lot within this workstream are designed to provide clients with asset management services (All Appointed Companies are listed alphabetically).

EPC assessments		
North Wales	Mid Wales	South West and South East Wales
Arthian	Arthian	Arthian
Energy & Compliance Technology	Energy & Compliance Technology	Energy & Compliance Technology
Rand Associates Consultancy Services	Rand Associates Consultancy Services	Rand Associates Consultancy Services
TWC Consulting [Zero Carbon Consultants]	TWC Consulting [Zero Carbon Consultants]	Taylor Lewis

Retrofit consultancy (PAS2035/PAS2038)		
North Wales	Mid Wales	South West and South East Wales
ECD Architects	ECD Architects	ECD Architects
LivGreen	LivGreen	LivGreen
Rand Associates Consultancy Services	Rand Associates Consultancy Services	Rand Associates Consultancy Services
Rider Levett Bucknall UK	Rider Levett Bucknall UK	Rider Levett Bucknall UK
Taylor Lewis	Taylor Lewis	Taylor Lewis
TWC Consulting [Zero Carbon Consultants]	TWC Consulting [Zero Carbon Consultants]	--

Digital co-ordinator		
North Wales	Mid Wales	South West and South East Wales
BIMBox Associates	BIMBox Associates	BIMBox Associates
ECD Architects	ECD Architects	ECD Architects
Holmes Miller	Holmes Miller	Holmes Miller
Rider Levett Bucknall UK	Rider Levett Bucknall UK	Rider Levett Bucknall UK
Ridge and Partners	Ridge and Partners	Ridge and Partners
Ryder Architecture	Ryder Architecture	Ryder Architecture

**WORKSTREAM 4 - HEALTH AND SAFETY CONSULTANCY**

The services for each lot within this workstream covers aspects of health and safety consultancy (All Appointed Companies are listed alphabetically).

Health and safety advisor/consultant		
North Wales	Mid Wales	South West and South East Wales
Atkins Réalis	Atkins Réalis	Atkins Réalis
Pembrokeshire Safety Services	Clear Safety Services	Clear Safety Services
Positive Safety Solutions	Pembrokeshire Safety Services	Pembrokeshire Safety Services
Rider Levett Bucknall UK	Positive Safety Solutions	Positive Safety Solutions
Thomson Gray	Rider Levett Bucknall UK	Rider Levett Bucknall UK

# EVALUATION

## CRITERIA

The process involved a single stage open tendering procedure as set out within the Public Contracts Regulations 2015.

The following qualification criteria were used to assess the suitability of appointed companies.

### Financial Stability Assessment

Appointed Companies were assessed on a range of financial information including liquidity and profitability and checked via Creditsafe. The results of this check were assessed on a pass/fail basis.

### Minimum Insurance Cover

Throughout the duration of the framework Appointed Companies are required to have the minimum levels of insurance to be considered as set out in the table below:

Insurance	Value
Employers (Compulsory) Liability Insurance	£5,000,000
Public Liability Insurance	£5,000,000
Professional Indemnity Insurance	£2,000,000

### Accreditations and Certifications

In order to be considered eligible for this Framework, Appointed Companies were required to evidence that they held both the applicable qualifications and accreditations for each Lot/ Workstream they were applying for.

Workstream 1 - Professional Consultancy		
Lot	Professional	Professional Qualifications (Mandatory)
1a	Architectural Services (Buildings)	Membership of the Architects Registration Board (ARB) is a mandatory requirement for this lot.
1b	Architectural Services (Landscaping)	Membership of the Architects Registration Board (ARB) is a mandatory requirement for this lot.
1c	Construction Project Management & Administration	Membership of a suitable and recognised professional construction body such as the Chartered Institute of Building (CIOB) or International Construction Project Management Association (ICPMA) or a general project management certification such as through the Association of Project Managers (APM), qualified Prince2 practitioner or similar accreditations with validated construction experience is a requirement for this lot.

# EVALUATION

## CRITERIA CONTINUED

1d	Construction Contract Administration	Membership of a suitable and recognised professional body such as The Royal Institute of Chartered Surveyors (RICS) Association of Project Managers (APM), Membership of the Chartered Institute of Building (CIOB) or equal equivalent with validated experience and knowledge of construction contracts is a requirement for this lot.
1e	Employers' Agent (EA)	Membership of a suitable and recognised professional body such as membership of the Chartered Institute of Building (CIOB), Royal Institution of Chartered Surveyors (RICS) APM or equivalent with experience is a requirement for this lot.
1f	Planning Services	A formal degree in construction planning, along with validated experience and knowledge in property development and management is a requirement for this lot.
1g	Master Planning	A formal degree in construction planning, along with validated experience and knowledge in property development and management is a requirement for this lot.
1h	Principal Designer	An industry recognised qualification in line with the Construction Design and Management (CDM) regulations specifically relating to the Principal Designer duties is a requirement for this lot.
1i	Civil & Structural Engineering	Membership of a suitable and recognised professional body such as membership of the Institution of Civil Engineers (ICE), The Institute of Structural Engineers (IStructE) or equivalent, with at least one person in the practice to have chartered status is a requirement for this lot.
1j	Clerk of Works	Membership of a suitable and recognised professional body such as membership of the Institute of Clerks of Works and Construction Inspectorate (ICWCI) or equivalent, along with evidenced experience is a requirement for this lot.
1k	Building Surveyor	Membership of a suitable and recognised professional body such as The Royal Institution of Chartered Surveyors (RICS) is a requirement for this lot.
1l	Quantity Surveyor / Cost Consultant	Membership of a suitable and recognised professional body such as The Royal Institution of Chartered Surveyors (RICS) or Quantity Surveyors International (Qsi) or equivalent with domestic and commercial building experience as appropriate is a requirement for this lot.

## EVALUATION

### CRITERIA CONTINUED

#### Workstream 2 – Mechanical, Electrical and Plumbing (MEP) Consultancy

Lot	M&E	M&E Qualifications (Mandatory)
2a	Mechanical, Electrical & Plumbing	Membership of a suitable and recognised professional body such as the Institute of Mechanical Engineers (IMechE), Electrical Contractors Association (ECA), Institute of Engineering and Technology (IET) or equivalent with experience is a requirement of this lot.
2b	Building Services Engineer (HVAC)	Membership of a suitable and recognised professional body such as the Chartered Institute of Building Services Engineers (CIBSE) or equivalent with experience is a requirement of this lot.



## EVALUATION

### CRITERIA CONTINUED



#### Workstream 3 – Asset Management Consultancy

Lot	Asset Management	Asset Management Qualifications (Mandatory)
3a	EPC Assessments	The requirements for this lot are that bidders are Domestic Energy Assessor (DEA) certified for domestic and Non-Domestic Energy Assessor (NDEA) certified for non-domestic. Registration with government departments according to current legislation such as the Department for Levelling up, Housing and Communities (DLUHC) is a requirement for this lot.
3b	Retrofit Consultancy (PAS 2035 and 2038)	The requirements for this lot are that bidders are certified and hold a current valid PAS related qualification such as a PAS Coordinator to cover both domestic and non-domestic installations and assume responsibility for the management of all roles.
3c	Digital Coordinator	The requirements for this lot are that bidders have validated BIM experience and a background in architecture, structural or mechanical, electrical systems etc. Qualifications from an industry recognised source such as via The Institution of Structural Engineers (IstructE), Chartered Institute of Building (CIOB), British Standards Institute (BSI) etc are required.

# EVALUATION

## CRITERIA CONTINUED

### Workstream 4 – Health and Safety Consultancy

Lot	Professional	Health & Safety Qualifications (Mandatory)
4	Health & Safety Advisor/ Consultant	The requirements for this lot are that bidders are competent and experienced and hold a suitable qualification such as the National Examinations Board in Occupational Safety and Health (NEBOSH), or Institute of Occupational Safety and Health (IOSH) at a suitable level.

#### Compliance with Equality Act 2010

Applicants were required to evidence through several confirmatory statements that they are compliant with the Equality Act 2010 and have robust measures in place to promote equality and diversity within their organisation.



# EVALUATION

## CRITERIA CONTINUED

### Quality Weighting 70%

**General Quality Questions** 40%

#### Gold Standard

Questions with regard to raising awareness of the standard, obtaining reliable information and prioritising safety, net zero and compliance.

#### Framework Management

Questions focussed on communication and collaboration, customer service and business continuity.

#### Social Value

Focused on improving the environment and local initiatives.

**Professional Capability Questions** 30%

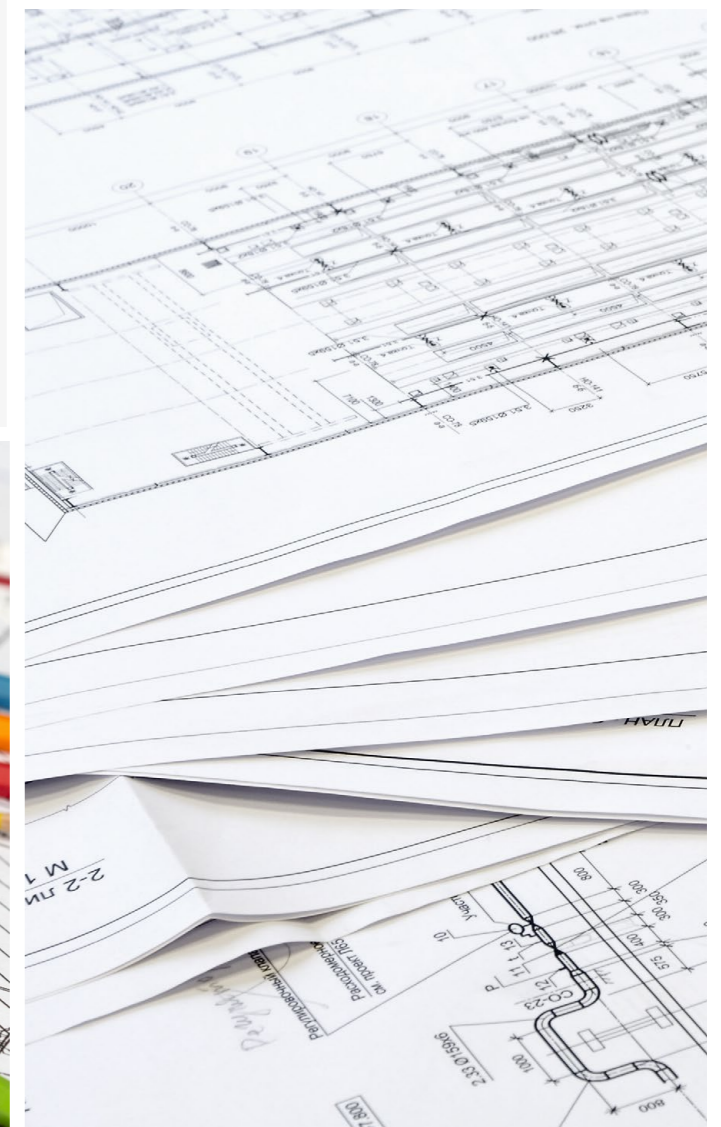
Certification/Accreditation  
Discipline – Technical Capability



### Price Weighting 30%

The pricing element of the evaluation process accounted for 30% of the overall score. 30%

The breakdown of the pricing evaluation for each lot varies, however, the price weighting for every lot is 30%.



## CALL-OFF AWARD OPTIONS

### THE FRAMEWORK ALLOWS PARTNERS THE OPTION OF:



When calling off projects, clients can use any one of a range of standard forms of building contract including JCT/SBCC, NEC/NEC4, ACE, PPC, TPC, FAC1, or their own in-house agreement.

### ELIGIBILITY

WPA is part of LHC, a not-for-profit organisation, governed by public law, and a central purchasing body providing procurement services.

Over 300 publicly funded organisations throughout the UK currently use LHC frameworks to procure works, goods and services to construct, refurbish and maintain social housing, schools and public buildings. The specific classes of public sector organisation authorised to use the framework include:

- Housing Associations and other Registered Social Landlords (RSLs)
- Health Authorities, Councils, Boards and Trusts
- Publicly funded schools
- Universities, colleges and other further education establishments
- Police authorities
- Fire and Rescue services
- Registered charities
- Government departments

**NB:** The framework can also be used by other organisations that are either publicly funded or have been given public funds and require a compliant procurement route.

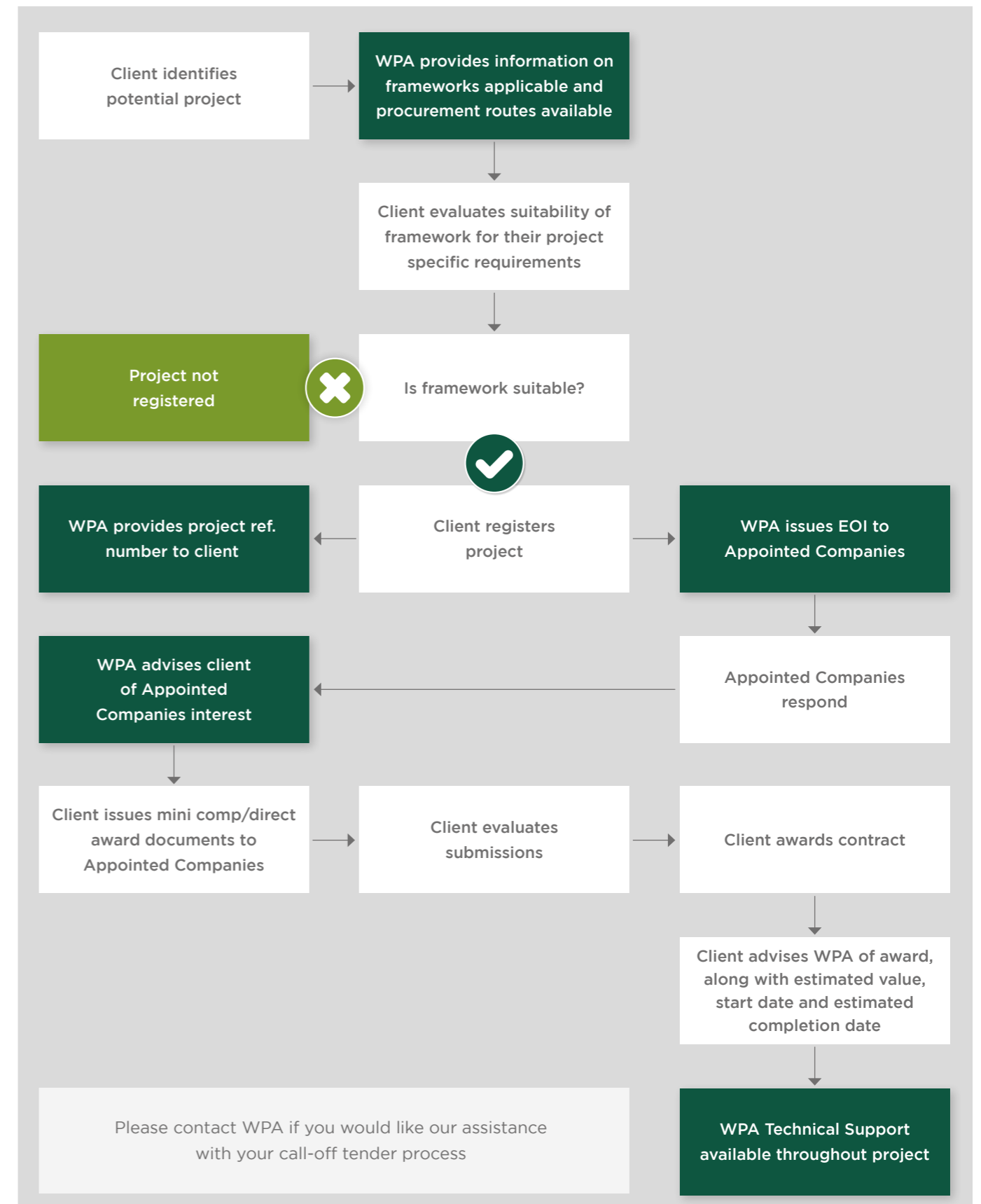
Details of those contracting authorities identified are listed at:  
[www.welshprocurement.cymru/who-we-work-with/](http://www.welshprocurement.cymru/who-we-work-with/)

### GENERAL TERMS AND CONDITIONS

LHC uses the FAC-1 standard form of contract to manage our frameworks. The LHC pro forma, which should be read in conjunction with the FAC-1 in published form, details the terms and conditions that govern the operation of the framework, including the procedures to call off projects under

the framework. A free copy of the LHC proforma is available upon request. The FAC-1 in standard published form can be purchased at a negotiated rate from ACA, by emailing [office@acarchitects.co.uk](mailto:office@acarchitects.co.uk) and quoting discount code reference: LHCFAC2516102017.

## THE PROCESS OF USING OUR FRAMEWORK





CYNGHRAIR | WELSH  
CAFFAEL | PROCUREMENT  
CYMREIG | ALLIANCE



**WPA**

Tredomen Innovation & Technology Centre |  
Tredomen Park | Ystrad Mynach | Hengoed | CF82 7FQ

In association with:



02922 802 476



info@welshprocurement.cymru



linkedin.com/company/wpa-welsh-procurement-alliance

